



Providing On-Site Dental Care

Mobile Dentistry for Individuals with
Intellectual and Developmental
Disabilities (IDD)

enabledental.com



Our Mission

Enable Dental provides patient-centered dental services to adult and special needs populations through a non-traditional, innovative model of portable, on-site dentistry.



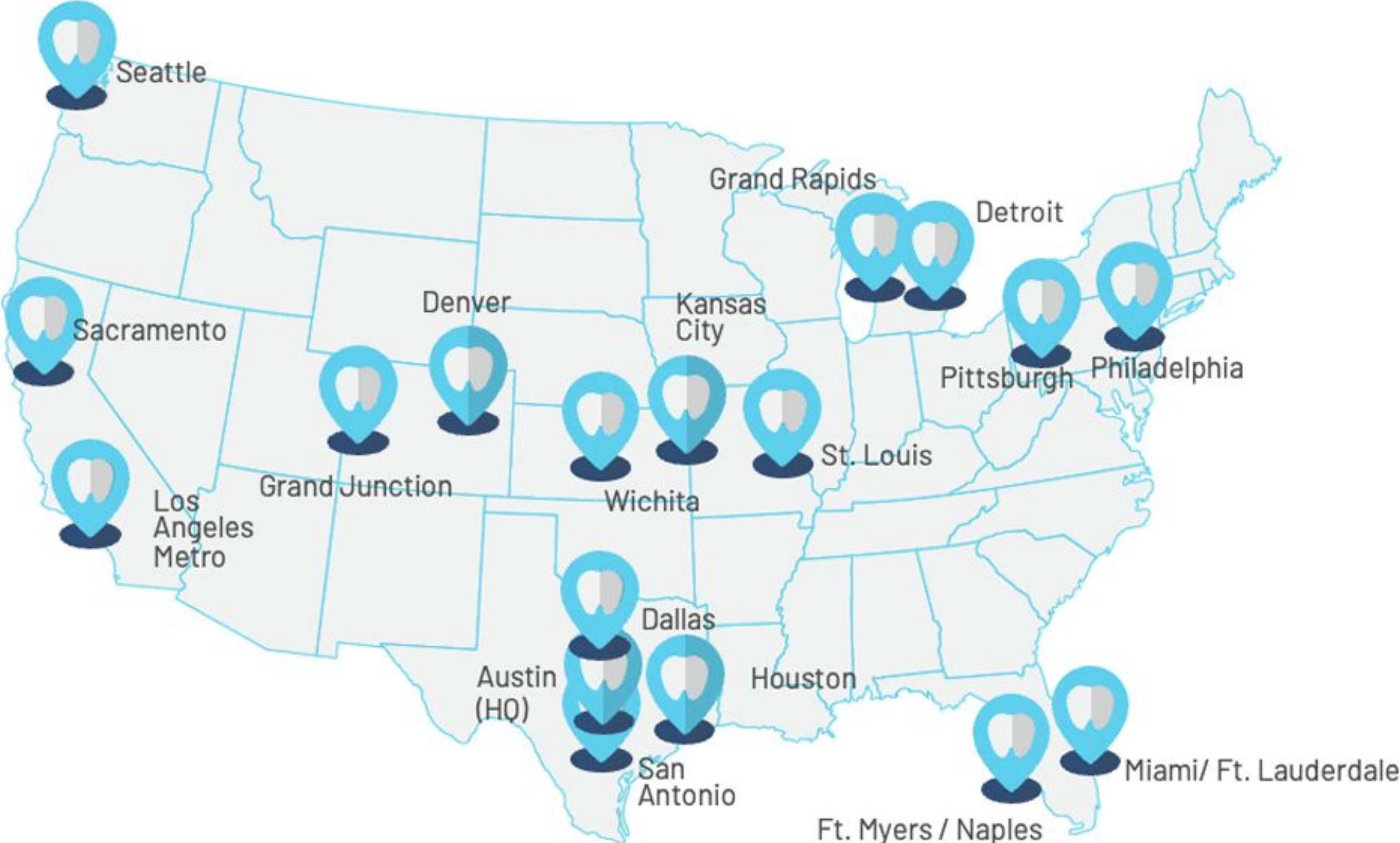
What We Do

Enable Dental prioritizes care coordination and integration of overall health.

Our care model encourages a proactive approach to integrated care to better serve those with chronic disease and high-risk tooth decay. Our ability to coordinate medical, behavioral, and dental services acknowledges the crucial connection between dental care and overall health.



Service Locations



Services and Engagement



Dental Exams



Cleanings



Dentures



Fillings



X-Rays



Crowns



Bridges



Extractions



Root Canals



Night Guards



Hygiene Therapy



Other Dental Procedures

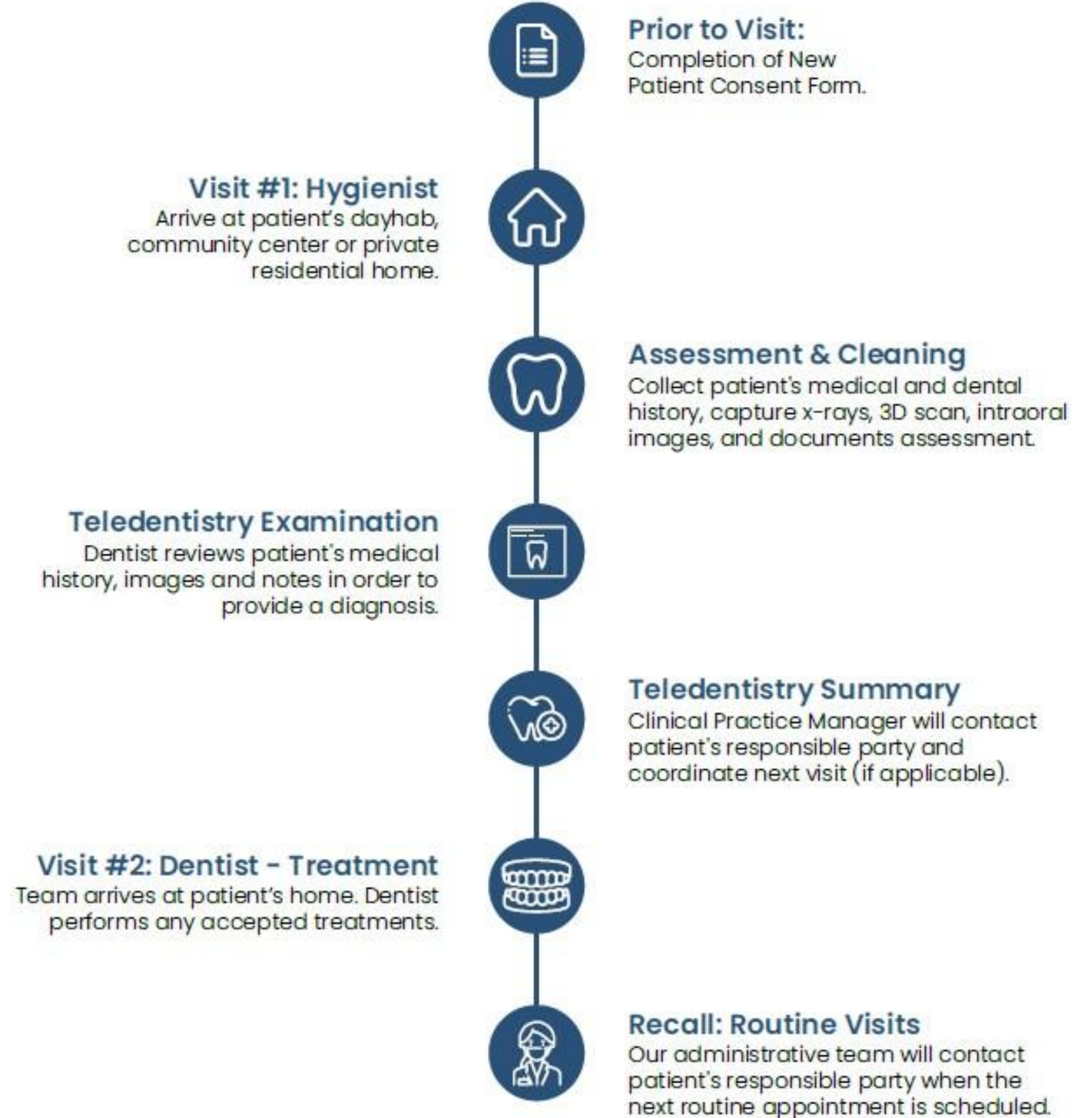
Engagement With Members

- Integrated care coordination
 - Personalized care plan
- Collaboration with Health Plan team
 - Identification of patients
 - Highest need members
 - Review of dental and medical histories

Teledentistry In Action



What to Expect with Teledentistry





Event Days

Dental Care Process for Facilities with Enable Dental:

- 1. Scheduling Initial Visits:** Enable Dental arrange the initial event day for each facility on a quarterly basis.
- 1. Event Day Services:** On the scheduled date, Enable Dental visits the facility to conduct exams, provide urgent treatments, and perform cleanings as necessary.
- 1. Follow-Up Treatments:** Enable Dental returns in the subsequent weeks to deliver any approved treatments. Facility staff and responsible parties are informed and involved in this process.
- 1. Regular Check-Ups and New Patients:** Enable Dental proactively schedules the next visit for regular check-ups and to accommodate new patients, ensuring ongoing dental care for all residents.

Patchwork of Care



Federal Regulations and Funding



State Departments and Funding



County and Non-Profit Support

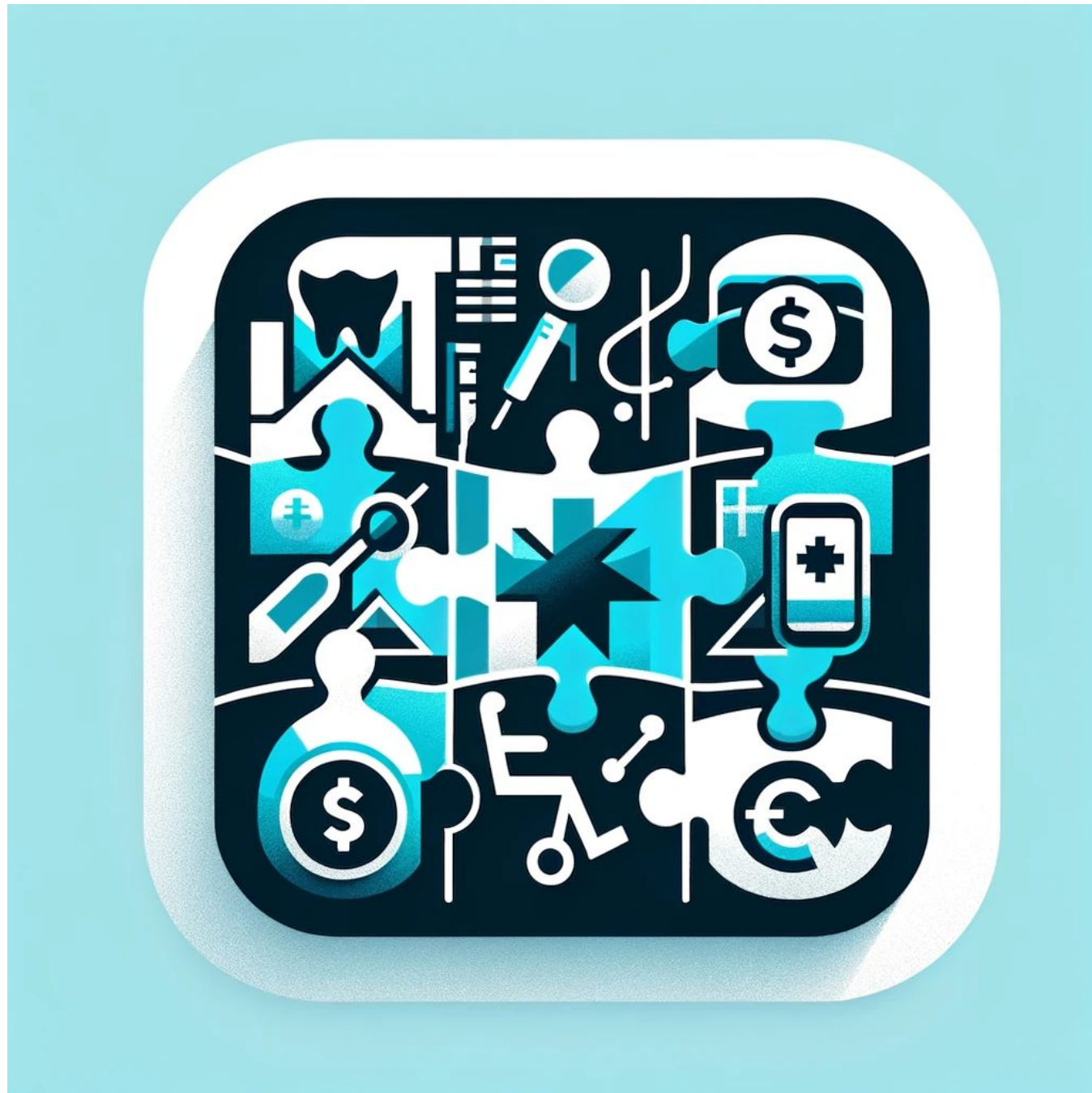


Remaining Gaps



Solutions

Patchwork of Care



Federal Regulations
and Funding



State Departments and Funding



County and Non-Profit Support



Remaining Gaps



Solutions

The Funding Layers for IDD Dental

1

Centers for Medicare and Medicaid Services

2

State Medicaid: MOHealthNet

3

MO Department of Mental Health

4

County Senate Bill 40 Boards

5

Health and Community Based Services

6

State and Local Non-Profits

Centers for medicare & Medicaid Services (CMS)

Federal agency overseeing health care coverage including Medicare, Medicaid, and the Children's Health Insurance Program (CHIP).

- Importance for IDD Population: Ensures access to health care services, including dental care, for eligible adults with IDD under Medicaid.
- Coverage Overview: Dental benefits vary by state
 1. Medicaid- requires only emergency dental coverage, but many states use Medicaid Expansion funds to increase coverage. Some adults with IDD that live in Long Term Care may have higher coverage
 2. Health and Community Care Based Waivers- are designed by states using Medicaid funds
 3. Medicare- some health conditions that an individual has may allow for Medicare to coverage.
 4. Medicare Advantage iSNPs- increasingly patients that are living in Long Term Care may get additional dental coverage with their plan.



Missouri Medicaid MO HealthNet

Dental Coverage for Adults with IDD

- Mostly covered under the Limited Adult Dental Benefit Design
 - Covers preventive, diagnostic, and emergency dental services
 - Aims to maintain oral health and address immediate dental issues
- A small subgroup residing in Long-Term Care settings receive the Full Dental Benefit Design
 - Comprehensive dental services beyond emergency care
 - Includes restorative treatments, dentures, and other necessary dental procedures

Fee-for-Service Model

- These patient groups are not under managed care contracts
- Dental coverage is administered directly through MO HealthNet
- Providers bill MO HealthNet directly for services rendered



Health and Community-Based Services (HCBS)

Home and Community-Based Services (HCBS) are programs designed to provide people with disabilities, older adults, and others with specific needs a variety of services within their own home or community rather than in a hospital or care facility. HCBS waivers are designed to offer a broad range of services, including but not limited to:

- Personal care services
- Respite care
- Home modifications
- Supported employment services
- Day habilitation
- Behavioral health services

Relevance to IDD Adults: HCBS waivers can cover specialized services for individuals with IDD, including certain dental services not typically covered by Medicaid.



Missouri Department of Mental Health (DMH)

- **Community Living Support:** Assists individuals with IDD to live independently through residential services, day programs, and personal care.
- **Behavioral Support Services:** Offers interventions for those exhibiting challenging behaviors to improve community participation and quality of life.
- **Early Intervention and Family Support:** Identifies and addresses early needs while supporting families.
- **Vocational and Employment Services:** Provides job coaching, vocational training, and workplace accommodations to help individuals with IDD secure and maintain employment.
- **Health and Wellness Programs:** Promotes physical and mental health with access to specialized care and wellness activities.
- **Legal and Advocacy Services:** Aids in navigating legal rights and the care system, offering advocacy and guardianship support.



Senate Bill (SB) 40 Boards

A quasi-governmental entity enabled by the passage of Senate Bill 40 in 1969, empowering counties to levy a property tax to fund local services for individuals with Intellectual and Developmental Disabilities (IDD). These boards oversee and finance a variety of IDD support services, allowing for customized assistance tailored to the needs of the community.

- **Local Funding:** Funded through a local property tax approved by voters within the county. This funding is dedicated to services for people with IDD within the local community.
- **Autonomy and Local Control:** Each SB 40 Board operates independently, allowing for services and programs that are tailored to meet the specific needs of the local IDD population.
- **Service Coordination:** These boards play a significant role in coordinating a wide range of services, including residential support, employment services, day programs, and other community integration efforts.
- **Advocacy and Awareness:** Besides funding and coordinating services, SB 40 Boards also work to raise awareness about the needs and potential of people with IDD in the community. They advocate for policies and practices that promote inclusion and accessibility.
- **Partnerships:** SB 40 Boards often collaborate with other community organizations, service providers, and state agencies to enhance and expand the services available to individuals with IDD.



Health and Community-Based Services (HCBS)

Home and Community-Based Services (HCBS) are programs designed to provide people with disabilities, older adults, and others with specific needs a variety of services within their own home or community rather than in a hospital or care facility. HCBS waivers are designed to offer a broad range of services, including but not limited to:

- Personal care services
- Respite care
- Home modifications
- Supported employment services
- Day habilitation
- Behavioral health services

Relevance to IDD Adults: HCBS waivers can cover specialized services for individuals with IDD, including certain dental services not typically covered by Medicaid.



Missouri Partnership for Hope Waiver

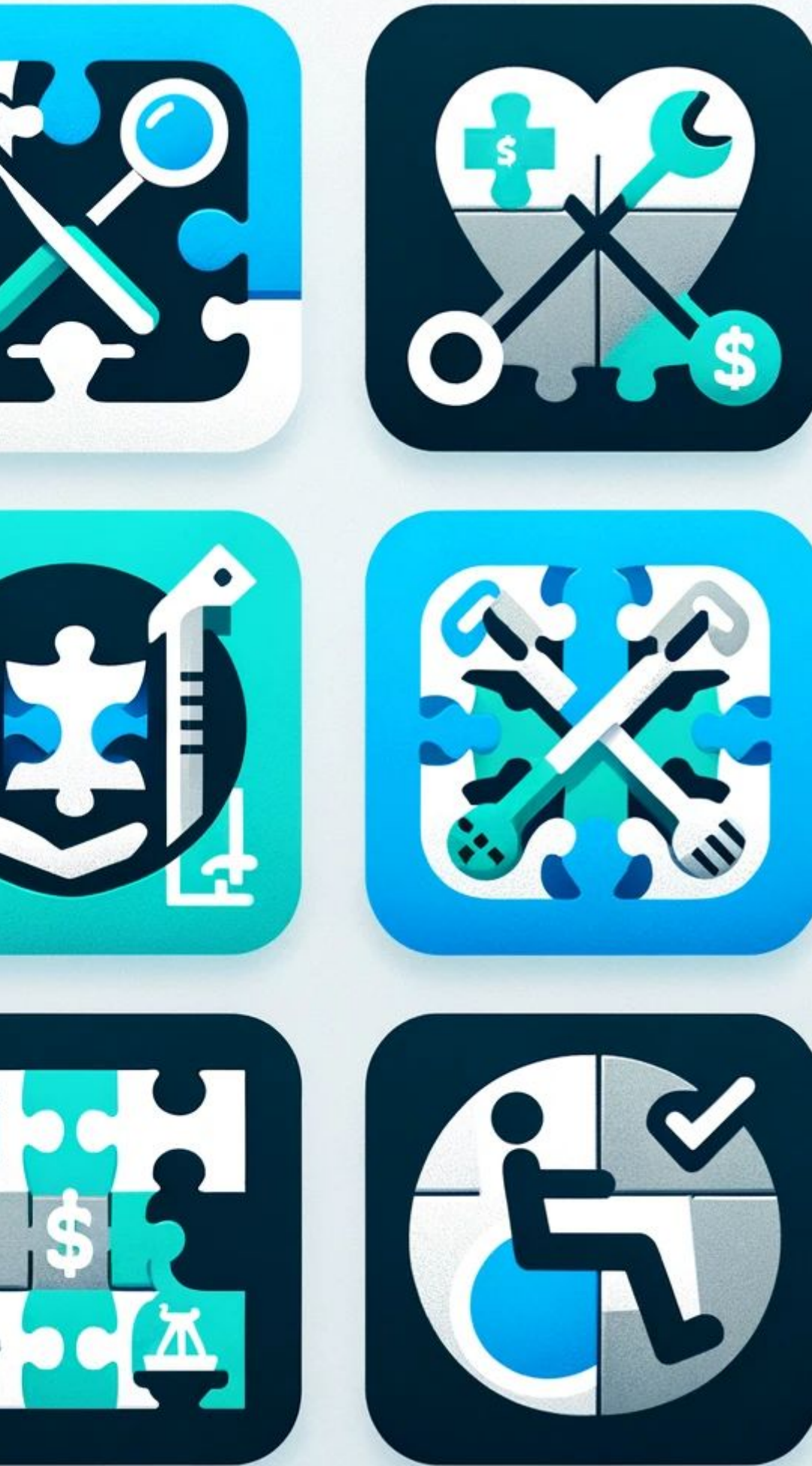
The Missouri Partnership for Hope Waiver is a Medicaid program aimed at providing support and services to individuals with Intellectual and Developmental Disabilities (IDD) to live more independently in their communities. It encompasses a wide range of services, including dental care, under a specified annual budget cap.

- **Comprehensive Support:** Offers various services such as personal care, employment support, and residential living aids to enhance the quality of life for individuals with IDD.
- **Dental Care Coverage:** Includes dental services as part of its comprehensive support, acknowledging the importance of oral health in overall well-being.
- **Annual Budget Cap:** Each participant is allocated a maximum amount of funds for services per year, emphasizing the need for careful planning of service utilization.
- **Balancing Resources:** Utilizing funds for dental care impacts the availability of funds for other services within the same fiscal year, necessitating judicious use of the waiver benefits.



Missouri System Barriers

- Local Level Prioritization: Despite the clear necessity, dental care often does not emerge as a priority within Home and Community-Based Services (HCBS) and local staff.
- Advocacy Challenges: The patient population within these services may struggle with self-advocacy, especially concerning dental needs and pain management.
- Communication Gaps: There is a noticeable lack of follow-through despite repeated contacts to HCBSs, indicating systemic communication failures.
- Integration Issues: Routine dental care remains disconnected from the broader system of Home and Community-Based Services and the Department of Mental Health, illustrating a significant gap in comprehensive care.



Missouri Funding Barriers



- Limited Coverage: The scope of currently covered services under Medicaid is narrow, with a comprehensive exam for new patients being the only fully covered exam and severe restrictions on emergency visits.
- Excluded Preventative Care: Essential preventative procedures, including topical fluoride, silver diamine fluoride, and periodic exams, are not covered. This limitation extends to a wide range of dental X-ray codes, indicating a significant preventive care gap.
- Home/Facility Visit Limitations: Home visits or facility visits are not covered under current Medicaid codes, limiting access for individuals unable to visit dental offices physically.
- Behavioral Modification/Management Needs: Specialized needs, including behavioral modification or management for individuals with special needs (D9997-Special Needs Case Management), are not addressed within current Medicaid coverage.

How do other states Fund IDD Dental Care

Managed Care Strategies in KS, CO and CA

- Single managed care company model.
- Benefits: Unified claim process and identical benefit cards for all patients.
- Enhanced rates via Waiver funds to cover additional codes and rates beyond the general Medicaid population.
- This model is more closely aligned with traditional insurance models of care and thus easier for dental providers to service.

Texas' Approach to Dental Waivers

- Dedicated Dental Waivers instead of Medicaid
- HCBS Organizations pay the dentist using waiver funds on the patients behalf
- Budget allocations and lives served by each program.
 - CLASS (Community Living Assistance and Support Services)
 - Budget: \$10,000 per IPC in combined with adaptive aids
 - Lives served: 10,848
 - HCS (Home and Community Services)
 - Budget: \$2,000 per IPC
 - Lives served: 19,573
 - TXHML (Texas Home Living)
 - Budget: \$1,000 per IPC
 - Lives served: 17,121

Advocating for an IDD Dental Waiver

To add a waiver for dental coverage in Missouri, the state would need to submit a proposal to the Centers for Medicare & Medicaid Services (CMS), outlining the specifics of the desired dental services to be covered under Medicaid for individuals with Intellectual and Developmental Disabilities (IDD). This process involves demonstrating how the waiver will meet the needs of this population in a cost-effective manner and improve their access to dental care.

- **Draft a Comprehensive Proposal:** Detailing the scope, objectives, and expected outcomes of the dental coverage, including the population to be served and the types of dental services to be included.
- **Demonstrate Cost-Effectiveness:** Show that providing dental services through the waiver will not exceed the costs of institutional care, aligning with CMS's requirement for cost neutrality.
- **Public Input and Consultation:** Engage with stakeholders, including individuals with IDD, their families, and dental care providers, to gather input and support for the waiver proposal.
- **State and Federal Approval:** Obtain approval from both Missouri state authorities and CMS, ensuring the waiver aligns with federal regulations and state healthcare goals.
- **Implementation and Monitoring:** Once approved, implement the waiver and establish a system for monitoring and evaluating its impact on dental care access and overall health outcomes for individuals with IDD.



Missouri Coalition Project

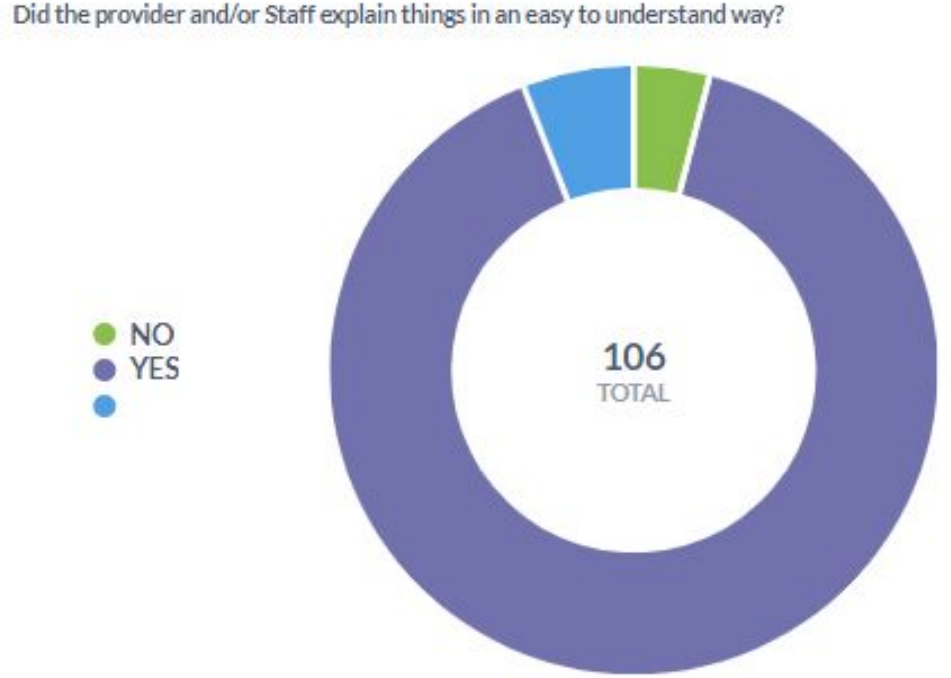
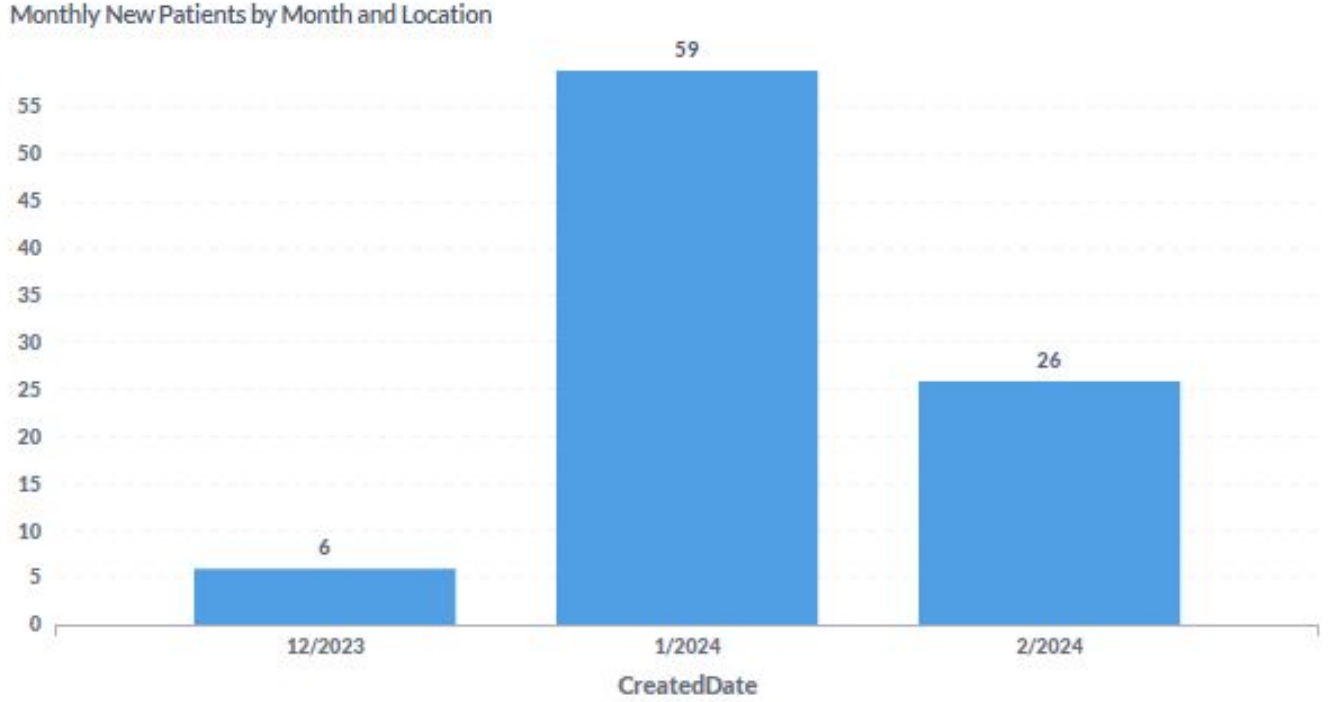


- Grant Funds from MO IDD Council and CareQuest
- Contract with MCOH
- Enable Dental has a contract to serve both St. Louis and Kansas City, even serving Kirksville. Enable is a multi state dental provider group that serves seniors and special needs patients.
- We are reporting on outcomes and issues relating to serving the I/DD population.
- The biggest gap in serving MO patients with I/DD and the other states we serve the procedure with the highest demand and lowest cost was only delivered to 8% of patients served. In states where Silver Diamine Fluoride D1354 is covered, over 70% of patients that had a history of fillings received the service from Enable Dental. The reason for the gap is that this is an out of pocket service which mean the disease goes untreated or a filling/extraction is delivered at 8-10x the cost to the state.



26
 Monthly New Patients
 ↓ 55.93% • was 59 last month

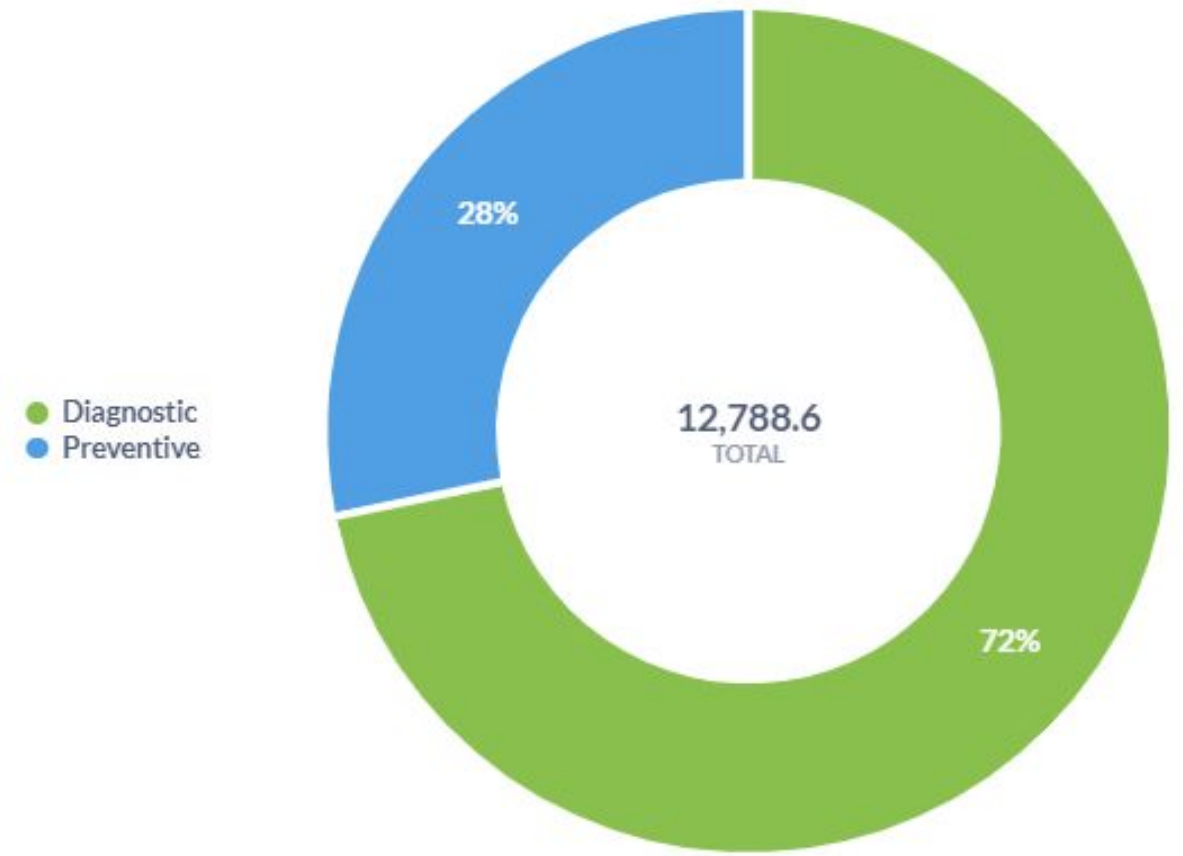
4
 Visit Count



Patients with Fillings & Prevention

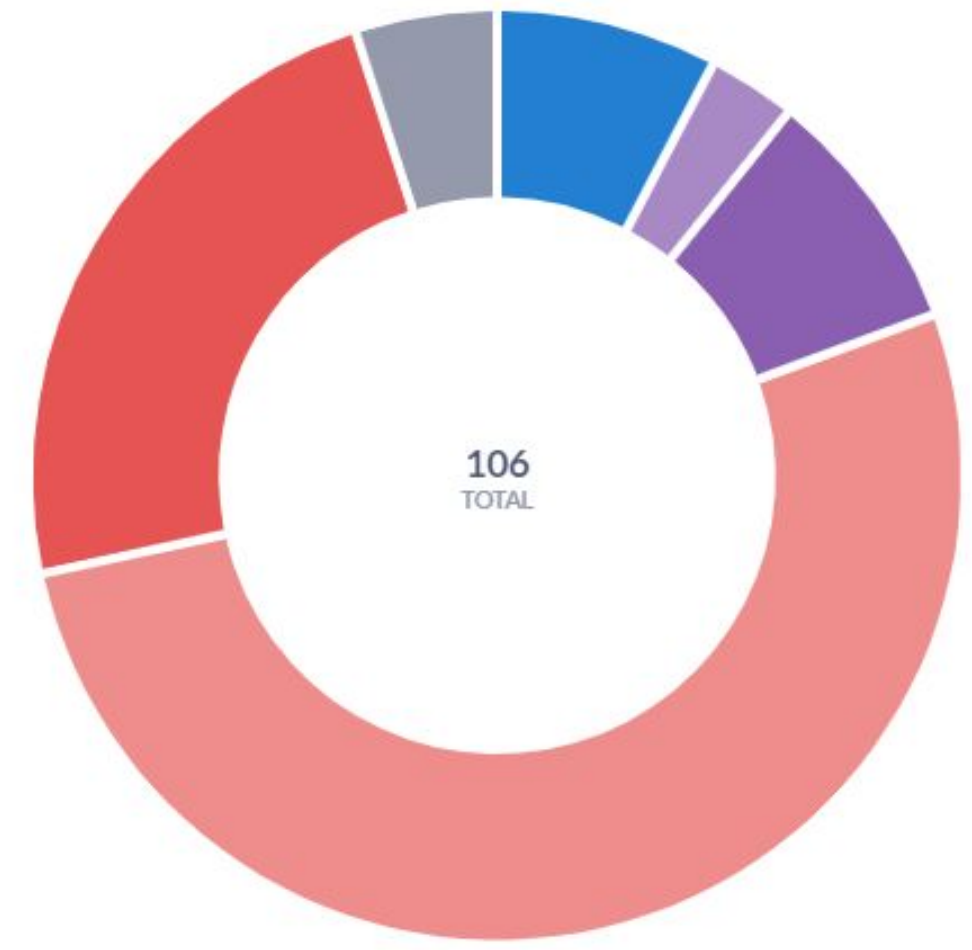
PrimaryInsurance	case
CareGiver	85.92%
MO Medicaid - Limited Adult Plan	5.21%
Sevita	72.58%
Texas HCS / ICF	82.2%

Production by Procedure Category



MCOH MOIDD Satisfaction

- ["Neither Satisfied or Dissatisfied|h... 7.55%
- Somewhat Satisfied 2.83%
- ["Somewhat Satisfied|https://www... 8.49%
- Very Satisfied 52.83%
- ["Very Satisfied|https://www.jotfo... 23.58%
- Other 4.72%



Enable Results Across States

Lack of Coverage = Low Ratio

Filling to Preventive Services Ratio

Characteristic
Comprehensive

Description

Percentage of all dental patients with 1+ fillings who also received a topical fluoride, sealant application or other non-traditional treatment, such as iodine mouthwash or silver diamine fluoride

Numerator: Number of dental patients with 1 or more fillings proposed or completed or existing (D2000-D2999) who received (completed) a topical fluoride (D1203 or D1204 or D1206), sealant application (D1351) or other non-traditional treatment, such as D1999 (unspecified treatment) for iodine therapy, or silver diamine fluoride (D1354)

Denominator: Number of dental patients with one or more fillings proposed or completed

- **Measure Identification Source**
 - MODIFIED- DQA Starter Set Measures Environmental Scan (2012)
 - MODIFIED- NQF Environmental Scan (2012)
- **Developer/Steward**
 - Managed Risk Medical Insurance Board (CA)

Patients with Fillings& Prevention

This question is written in SQL.

Primaryinsurance
4 selections

PrimaryInsurance

case

CareGiver	85.92%
MO Medicaid - Limited Adult Plan	5.21%
Sevita	72.58%
Texas HCS / ICF	82.28%

What Solutions I Suggest

Mandatory Preventative Visits and Screenings:

- Consideration of making dental preventative visits or annual screenings mandatory for the I/DD population in Missouri. This initiative would ensure early detection and prevention of dental issues, significantly improving overall dental health.
- Proposal to mandate reporting on annual dental visits or screenings. This would involve creating a system where healthcare providers or caregivers are required to report on the dental health status of individuals with I/DD annually.

Value-Based Waiver or Full Risk Model:

- Recommending a combined approach of DMH/Medicaid Waiver that adds a PMPM enhancement to the existing Medicaid coverage. This enhancement would cover additional procedures specifically for the I/DD population, providing more comprehensive dental care.
- This model would align provider incentives with patient health outcomes, potentially leading to better care quality and cost efficiency.

Mobile Dentistry for IDD



**Providing On-Site
Dental Care** | **Thank
You**

enabledental.com

Thank You

Dr. Nathan Suter, DDS
Chief Innovation Officer

Phone: (866) 988-4504

Fax: (866) 815-3719

Email:
dr.suter@enabledental.com

