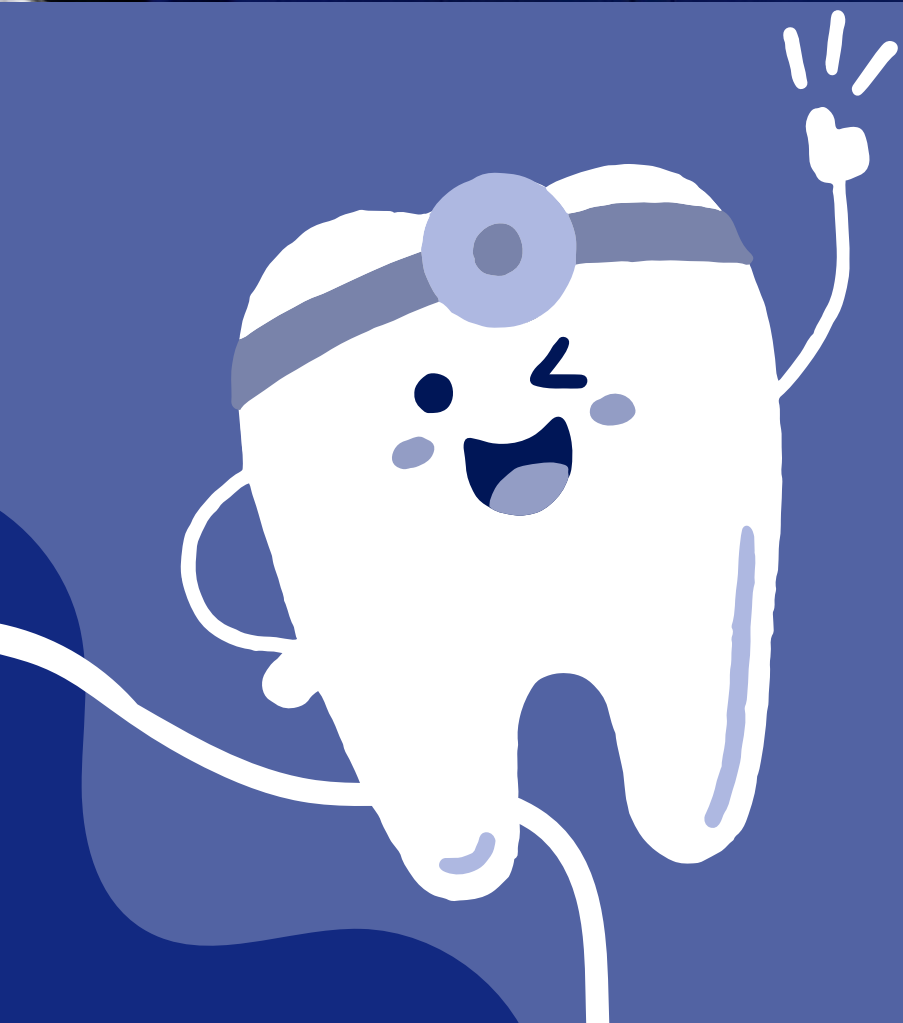


**JEFFERSON COUNTY
HEALTH DEPARTMENT**





-Smiles to Go Youth Van started in 2005

-Senior Smiles to Go Started in 2017

In 2021, we transitioned to seeing adult Medicaid patients, uninsured, as well as patients with Medicare Advantage Plans





DR. LINDSAY GRANT-STAWARSKI
DENTIST



RACHEL BEASLEY
**DENTAL ASSISTANT/
SUPERVISOR**



KRISTY KALTENBRONN
RDH



MARY KENNEY
RDH



**MEET
THE
TEAM**



BRANDON BOOTH
FRONT DESK/TEAM LEAD

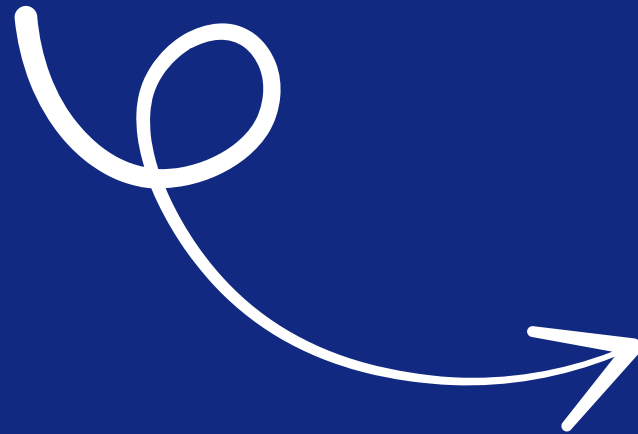
HOW DID THE GRANT HELP US?



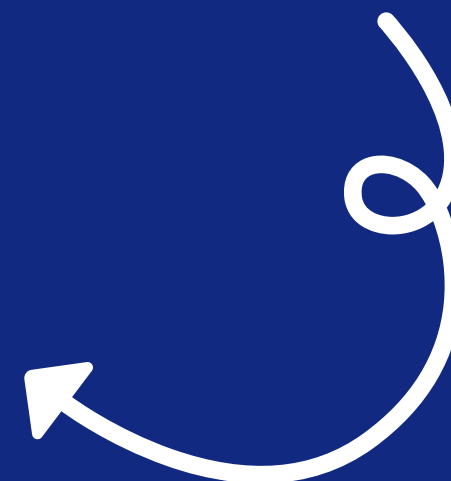
- Two Separate Servers to Cloud-Based System
- No longer a need to contract out temporary dentists run two vans with one dentist
- Pull students to the van once for preventative services
- Our dentist is able to provide more treatment



Visits Schools in Jefferson
County



Visits Various Locations
within Jefferson
County



STUDENTS SEEN BY SCHOOL YEAR

August 2021 – May 2022:

484 Students

Sealants: 894

SDF: 0 Students

August 2022 – May 2023

603 Students

Sealants: 938

SDF: 10 Students

August 2023 – February 2024

312 Students

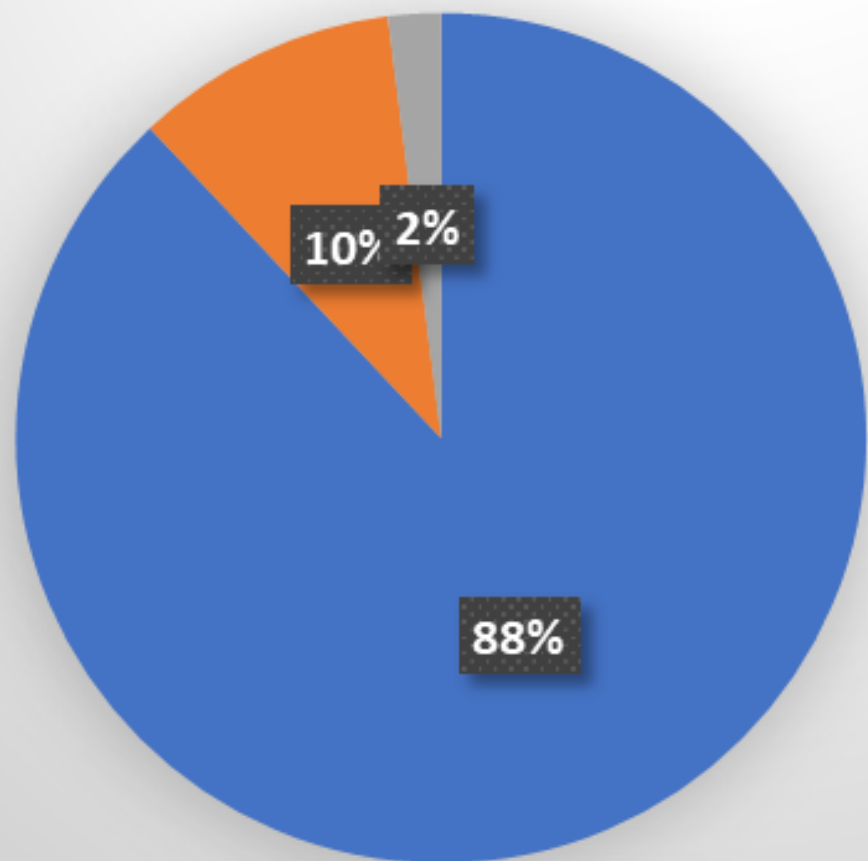
Sealants: 375

SDF: 15 Students



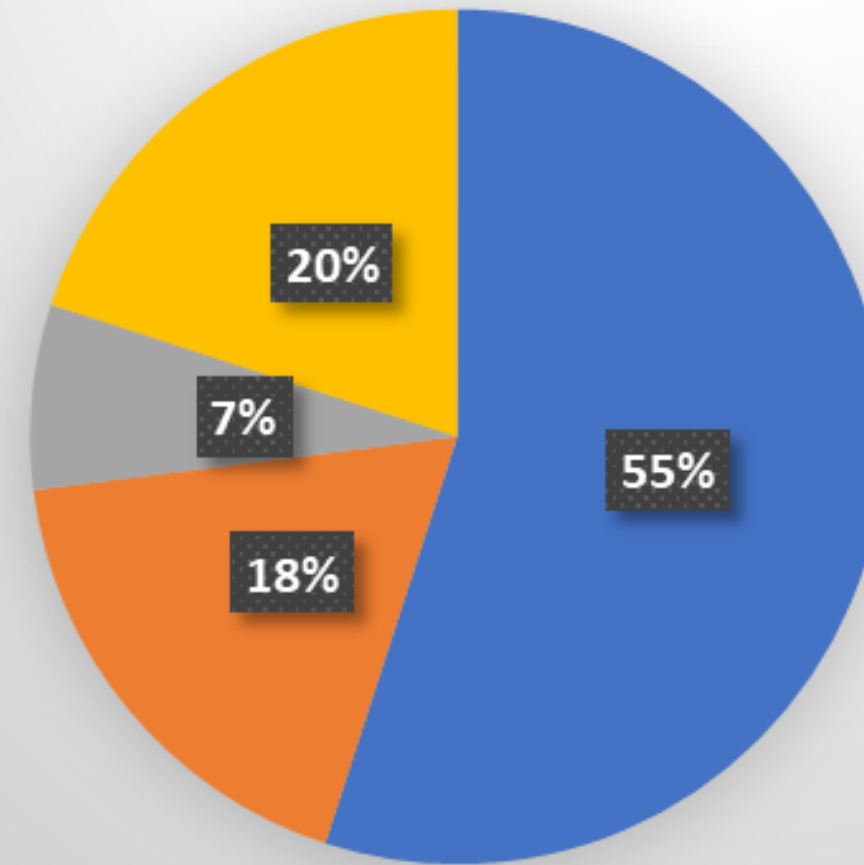


Smiles to Go



- MC+, FFS, Medicaid
- Commercial
- Uninsured

Senior Smiles To Go



- MC+, FFS, Medicaid
- Medicare
- Commercial
- Uninsured



THE FUTURE

- Provide Teledentistry Exams to Adults
- Dentist will only do treatment
- Add more schools
- See more uninsured students
- Goal: Have a hygiene van and a treatment van

